

# Reducing Chronic Absenteeism in Fairfax County Public Schools Through Economic Mobility Support to Families

**Fairfax County is initiating an Economic Mobility Pilot in October 2023 to help selected families meet basic needs. This pilot could be an opportunity to determine if economic support could reduce chronic absenteeism. See Economic Mobility Pilot for more information.**

By matching schools with high absenteeism in the Economic Mobility geographic zip codes and encouraging all eligible families to participate in the lottery, there could be an opportunity to assess the impact of this type of support on reducing absenteeism. This is especially true in high school settings where students have to work a significant number of hours to help their families meet basic needs (food, housing, transportation, etc.).

**\$750**  
Each Month for 15 Months

**FAIRFAX COUNTY ECONOMIC MOBILITY PILOT**

180 Fairfax County residents will be randomly selected to receive \$750 per month for 15 months to spend on whatever they choose.

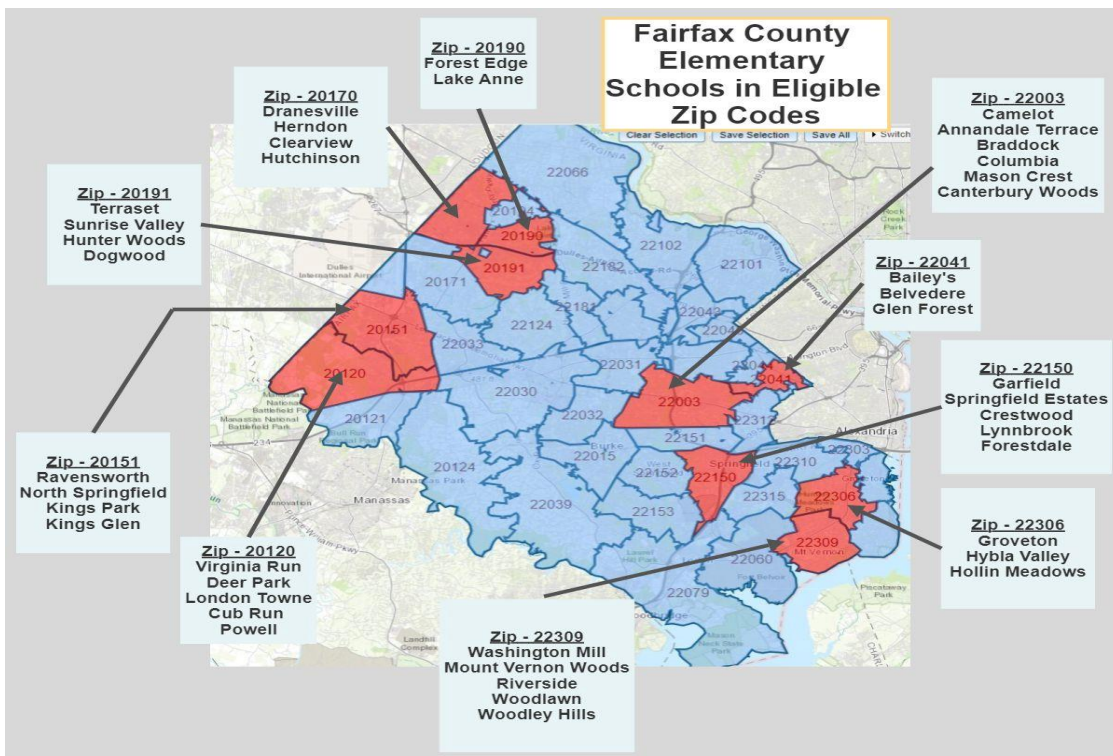
**ELIGIBLE RESIDENTS:**

- Are employed,
- Have at least one child aged 16 years or younger living in the household,
- Have a total household income that falls between 150% - 250% of the Federal Poverty Level. (See chart for income range), and
- Reside in one of the following ZIP codes: 22306, 22309, 20190, 20191, 22041, 20170, 22003, 22150, 20120 or 20151.

HOUSEHOLD SIZE	INCOME RANGE
Family of 2	\$29,580-\$49,300
Family of 3	\$37,290-\$62,150
Family of 4	\$45,000-\$75,000
Family of 5	\$52,710-\$87,850
Family of 6	\$60,420-\$100,700
Family of 7	\$68,130-\$113,550
Family of 8	\$75,840-\$126,400

**Apply online between September 23 through October 3, 2023**

Scan the QR code to learn more!  
 Visit <https://bit.ly/FairfaxEconMobility> or email us at [GIpilot@fairfaxcounty.gov](mailto:GIpilot@fairfaxcounty.gov)

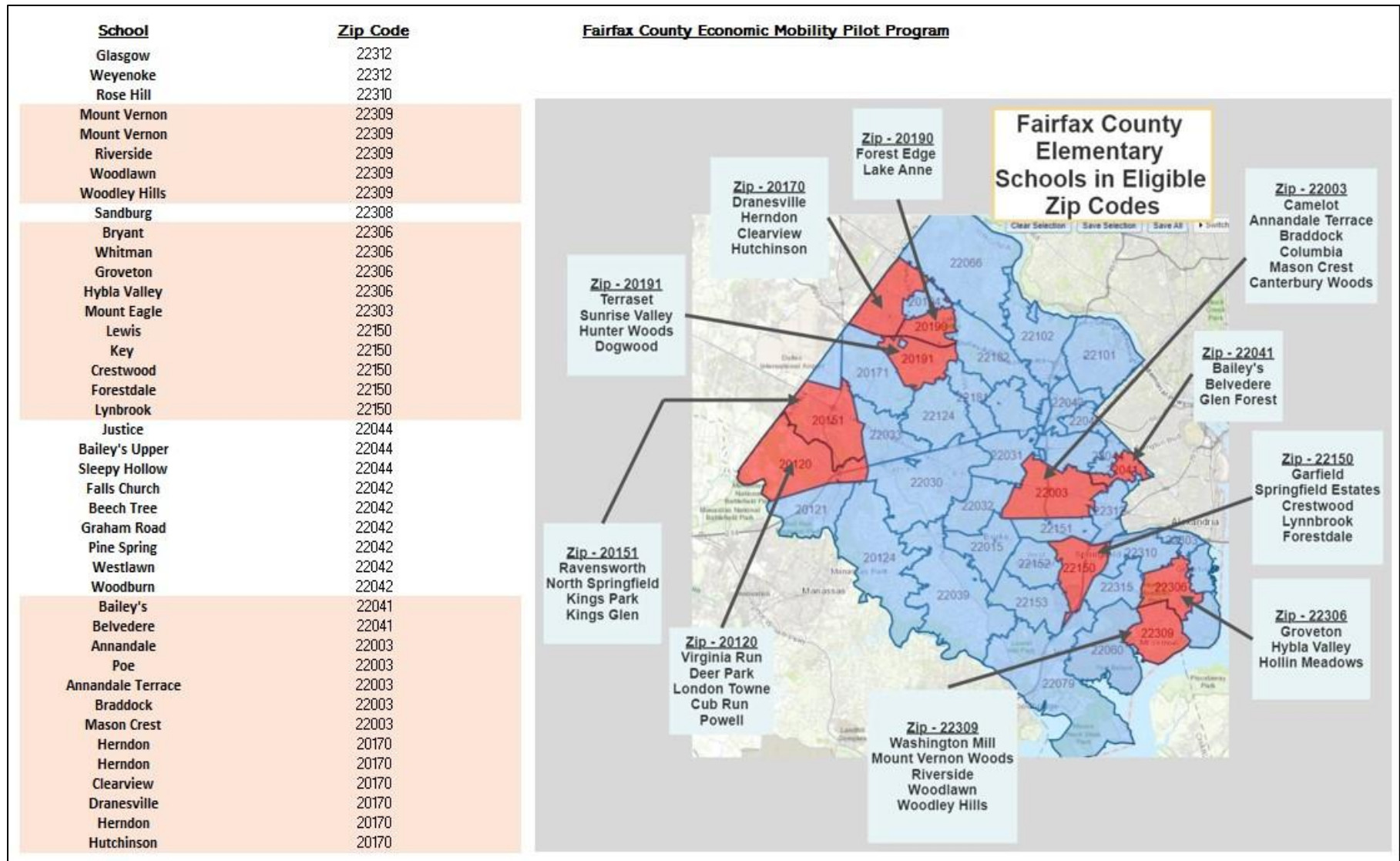


# Student Chronic Absenteeism in Fairfax County Public Schools

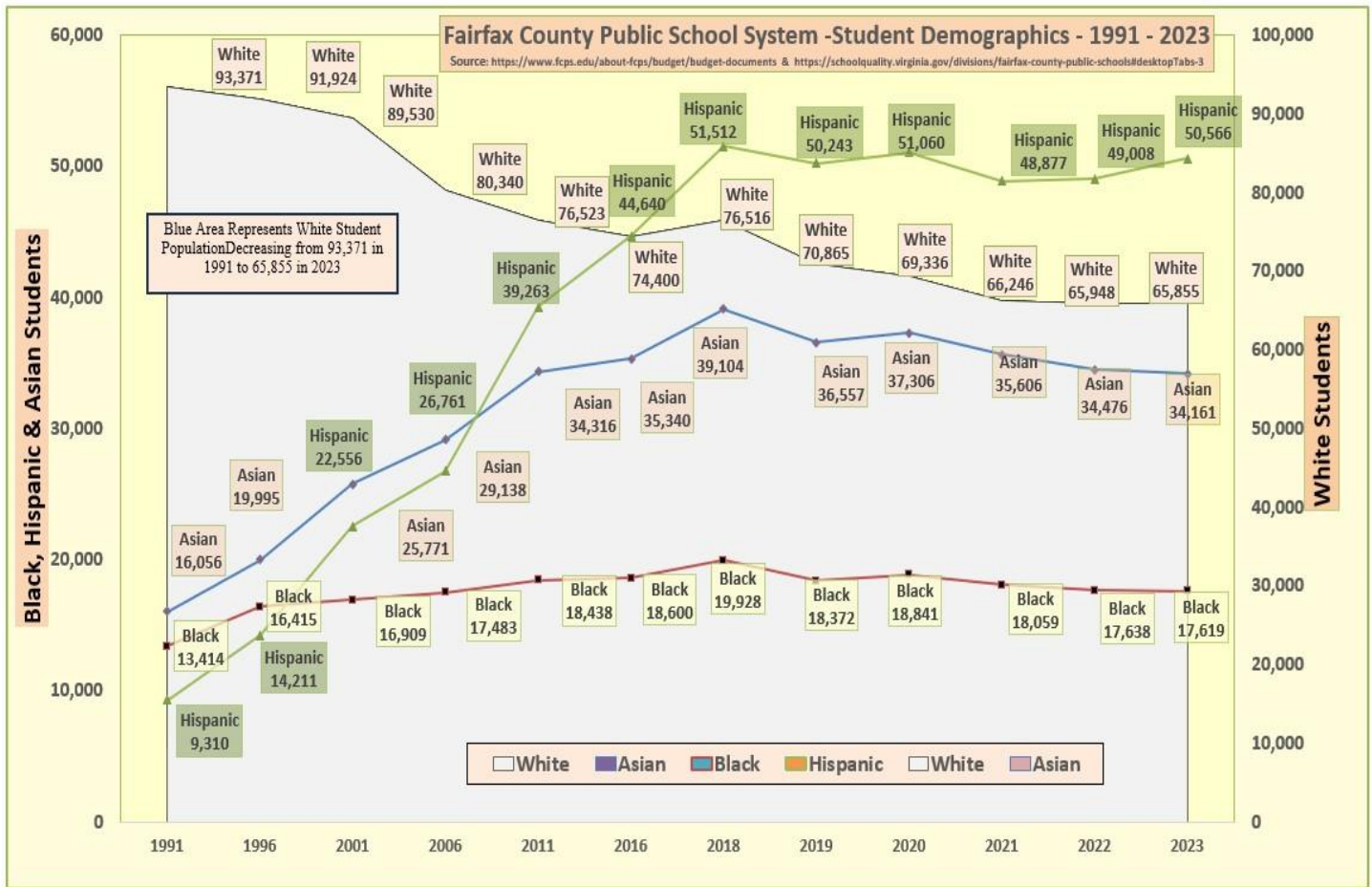
Source: <https://schoolquality.virginia.gov/divisions/fairfax-county-public-schools>

<u>% Hispanic Enrollment</u>	<u>High School</u>	<u>Hispanic</u>	<u>All Students</u>	<u>White</u>	<u>Asian</u>	<u>Black</u>
68%	Bryant	77%	75%	21%	40%	28%
61%	Falls Church	30%	24%	18%	14%	12%
57%	Justice	30%	25%	18%	20%	15%
54%	Annandale	31%	24%	16%	14%	19%
54%	Mount Vernon	29%	22%	13%	14%	14%
53%	Lewis	29%	25%	25%	19%	14%
52%	Herndon	30%	22%	13%	20%	12%
<u>% Hispanic Enrollment</u>	<u>Middle School</u>	<u>Hispanic</u>	<u>All Students</u>	<u>White</u>	<u>Asian</u>	<u>Black</u>
64%	Poe	31%	26%	17%	17%	13%
54%	Herndon	32%	27%	20%	24%	21%
54%	Glasgow	31%	25%	21%	15%	14%
54%	Kay	31%	24%	12%	21%	11%
50%	Whitman	28%	24%	23%	26%	16%
40%	Sandburg	27%	22%	15%	21%	26%
<u>% Hispanic Enrollment</u>	<u>Elementary School</u>	<u>Hispanic</u>	<u>All Students</u>	<u>White</u>	<u>Asian</u>	<u>Black</u>
84%	Lynbrook	30%	28%	18%	21%	0%
83%	Hybla Valley	29%	29%	4%	36%	35%
81%	Graham Road	22%	22%	0%	30%	40%
80%	Braddock	26%	25%	25%	24%	10%
77%	Bailey's Upper	16%	14%	10%	15%	5%
76%	Hutchinson	15%	15%	23%	21%	9%
73%	Crestwood	27%	25%	14%	22%	11%
71%	Westlawn	25%	22%	14%	13%	17%
70%	Bailey's	21%	21%	22%	23%	17%
70%	Mount Eagle	19%	17%	5%	0%	24%
67%	Sleepy Hollow	28%	23%	13%	19%	13%
66%	Herndon	26%	24%	16%	33%	28%
64%	Woodley Hills	24%	21%	9%	25%	13%
61%	Woodburn	23%	19%	8%	30%	0%
60%	Mount Vernon	27%	24%	18%	32%	14%
59%	Pine Spring	22%	19%	7%	26%	6%
59%	Groveton	26%	21%	7%	40%	11%
57%	Beech Tree	22%	17%	7%	16%	25%
56%	Clearview	24%	20%	11%	19%	22%
53%	Annandale Terrace	26%	20%	13%	17%	8%
53%	Woodlawn	31%	24%	9%	15%	21%
47%	Mason Crest	23%	18%	15%	14%	15%
46%	Rose Hill	18%	15%	10%	18%	16%
45%	Weyenoke	28%	24%	19%	21%	20%
44%	Dranesville	29%	21%	12%	19%	21%
44%	Riverside	29%	22%	12%	22%	15%
43%	Forestdale	29%	26%	26%	23%	24%
41%	Belvedere	26%	17%	13%	14%	3%

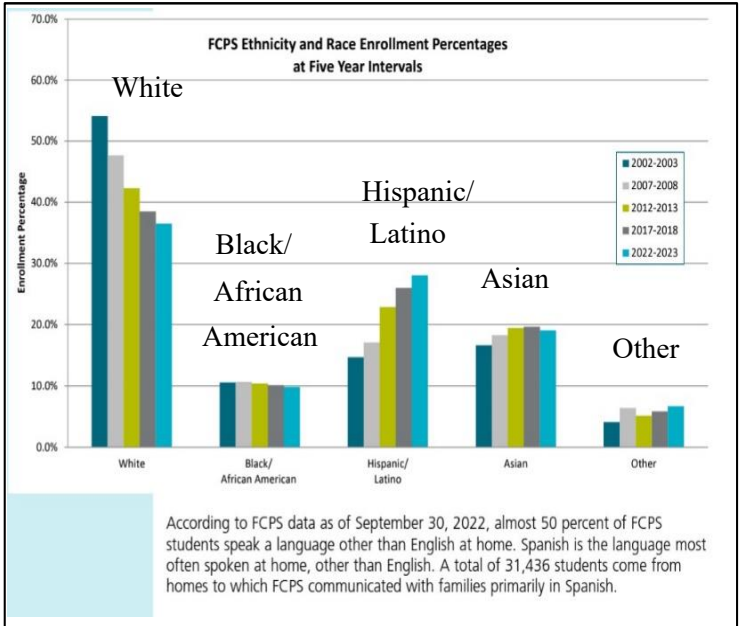
The schools highlighted below have high absenteeism and are in zip codes eligible to participate in the Fairfax County Economic Mobility pilot program. If these schools through their PTAs, counselors, and local community partners could encourage the families with students in their schools to enroll in the lottery then there might be an opportunity to assess the impact of economic mobility on chronic absenteeism.



# Fairfax County Public Schools Demographics



Finding ways to help reduce chronic absenteeism in Fairfax County Public Schools with High Hispanic Enrollment (40% of students or higher) could improve education outcomes.



**\$750**

Each Month  
for 15 Months



## FAIRFAX COUNTY ECONOMIC MOBILITY PILOT

180 Fairfax County residents will be randomly selected to receive \$750 per month for 15 months to spend on whatever they choose.

### ELIGIBLE RESIDENTS:

- ▶ Are employed,
- ▶ Have at least one child aged 16 years or younger living in the household,
- ▶ Have a total household income that falls between 150% - 250% of the Federal Poverty Level. (See chart for income range), and
- ▶ Reside in one of the following ZIP codes: 22306, 22309, 20190, 20191, 22041, 20170, 22003, 22150, 20120 or 20151.

HOUSEHOLD SIZE	INCOME RANGE
Family of 2	\$29,580-\$49,300
Family of 3	\$37,290-\$62,150
Family of 4	\$45,000-\$75,000
Family of 5	\$52,710-\$87,850
Family of 6	\$60,420-\$100,700
Family of 7	\$68,130-\$113,550
Family of 8	\$75,840-\$126,400

Apply online between September 23 through October 3, 2023



Scan the QR code to learn more!  
Visit <https://bit.ly/FairfaxEconMobility> or  
email us at [Glpilot@fairfaxcounty.gov](mailto:Glpilot@fairfaxcounty.gov)

**\$750**

Cada mes  
durante 15 meses



## CONDADO DE FAIRFAX MOVILIDAD ECONÓMICA PROGRAMA PILOTO

Se seleccionarán 180 residentes del Condado de Fairfax para que reciban \$750 al mes durante 15 meses, que podrán gastar en lo que deseen.

### LOS RESIDENTES ELEGIBLES:

- ▶ Tienen empleo,
- ▶ Tienen al menos un hijo de 16 años o menos viviendo en el hogar,
- ▶ Tienen ingresos familiares totales comprendidos entre el 150% y el 250% del nivel federal de pobreza. (Consulte la tabla para conocer el intervalo de ingresos), y
- ▶ Residen en uno de los siguientes códigos ZIP: 22306, 22309, 20190, 20191, 22041, 20170, 22003, 22150, 20120 o 20151.

TAMAÑO DE LA FAMILIA	INGRESOS
Familia de 2	\$29,580-\$49,300
Familia de 3	\$37,290-\$62,150
Familia de 4	\$45,000-\$75,000
Familia de 5	\$52,710-\$87,850
Familia de 6	\$60,420-\$100,700
Familia de 7	\$68,130-\$113,550
Familia de 8	\$75,840-\$126,400

Presente su solicitud en línea entre el 23 de septiembre y el 3 de octubre de 2023



Escanee el código QR para obtener más información  
Visite <https://bit.ly/FairfaxEconMobility>  
o envíenos un correo electrónico a [Glpilot@fairfaxcounty.gov](mailto:Glpilot@fairfaxcounty.gov)